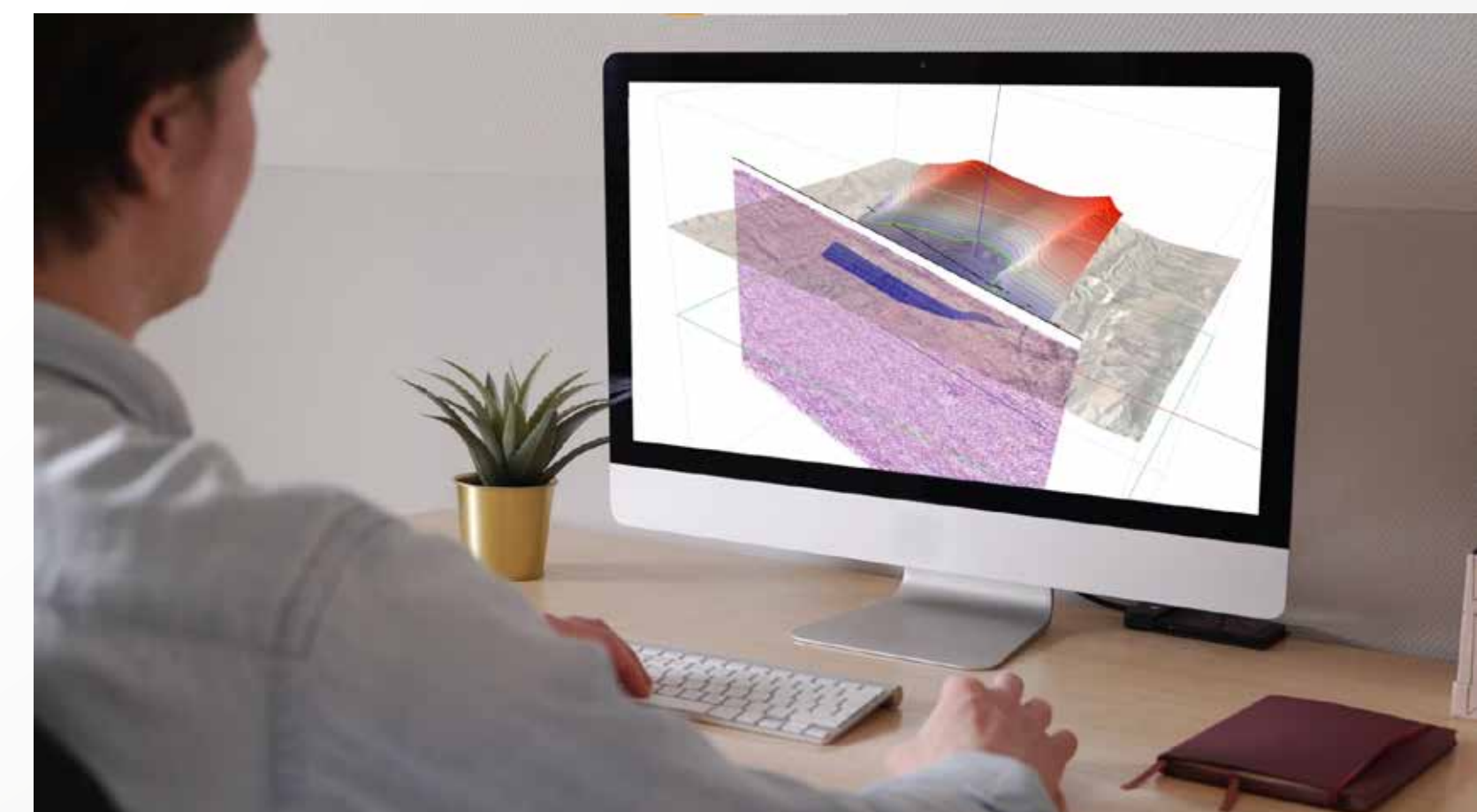
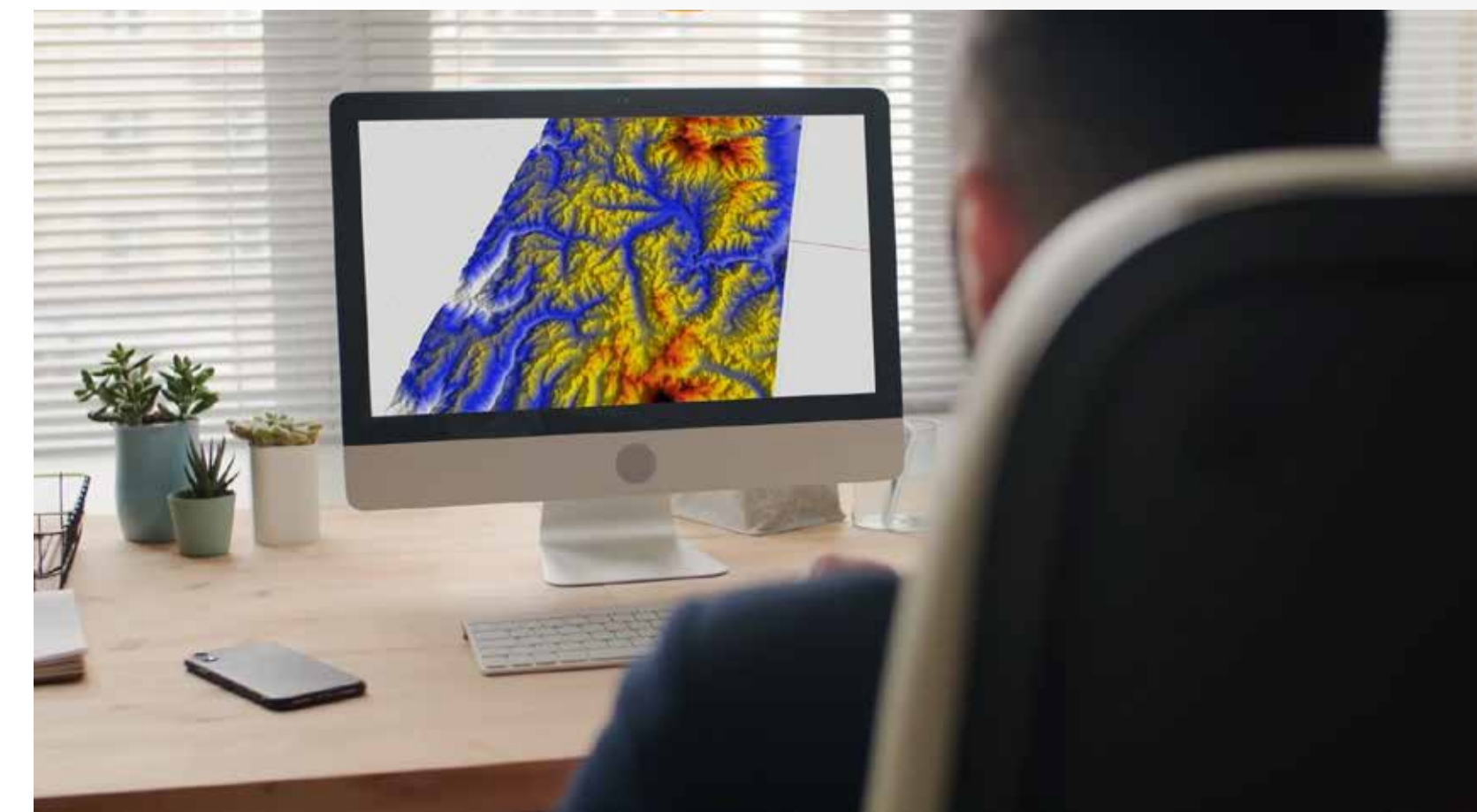


andino 3D

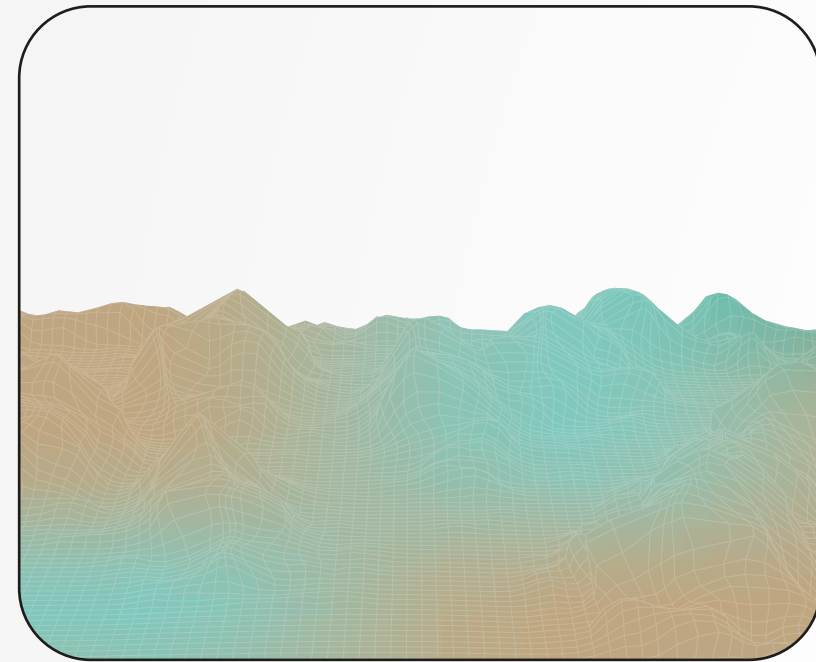


Andino 3D is a structural modeling software that will allow you to **develop robust solutions, integrating multiple surface and subsurface data.**

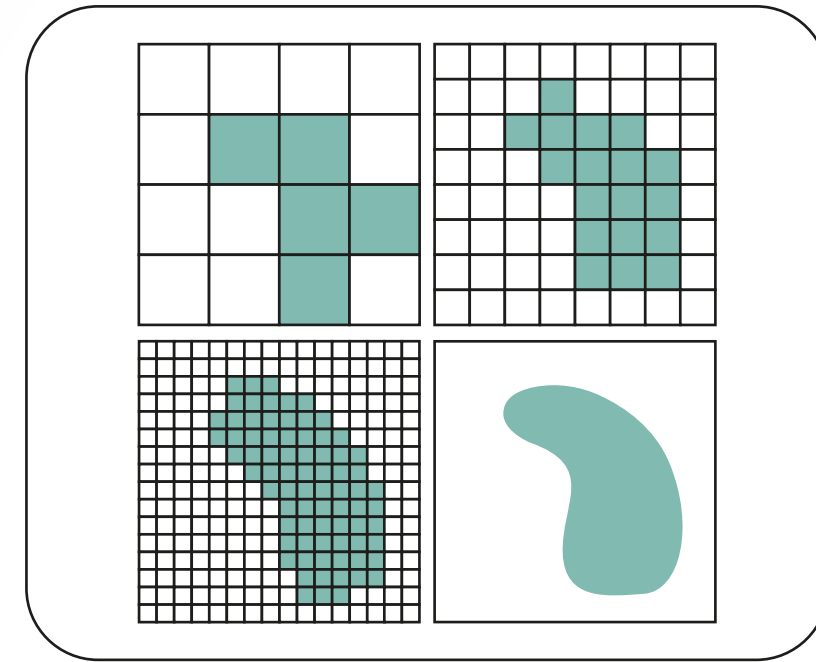
You will be able to **increase your working time efficiency and productivity** in a simple way.



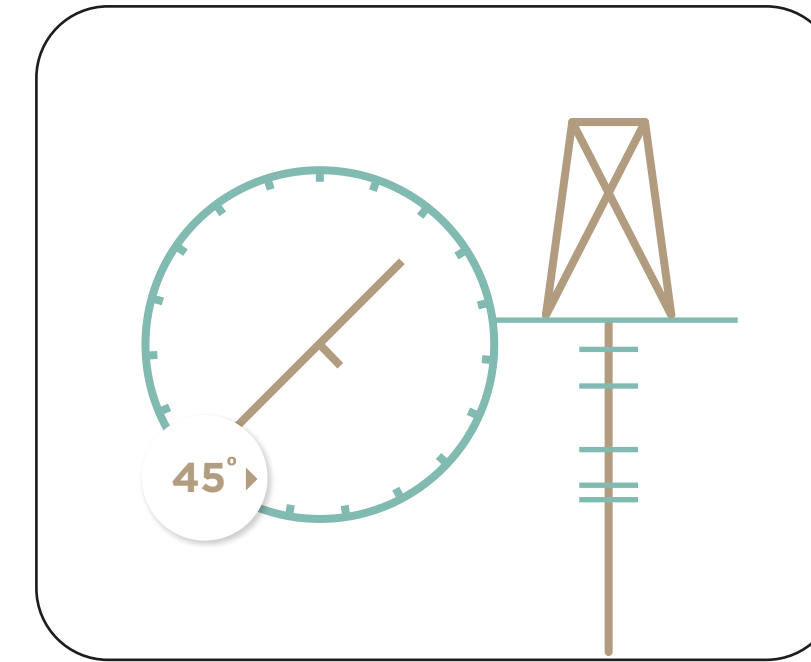
Andino 3D is a **three-dimensional platform** specially designed for the **development and analysis of geological and geophysical projects**, in **areas or structures of interest**, allowing the loading of multiple data types:



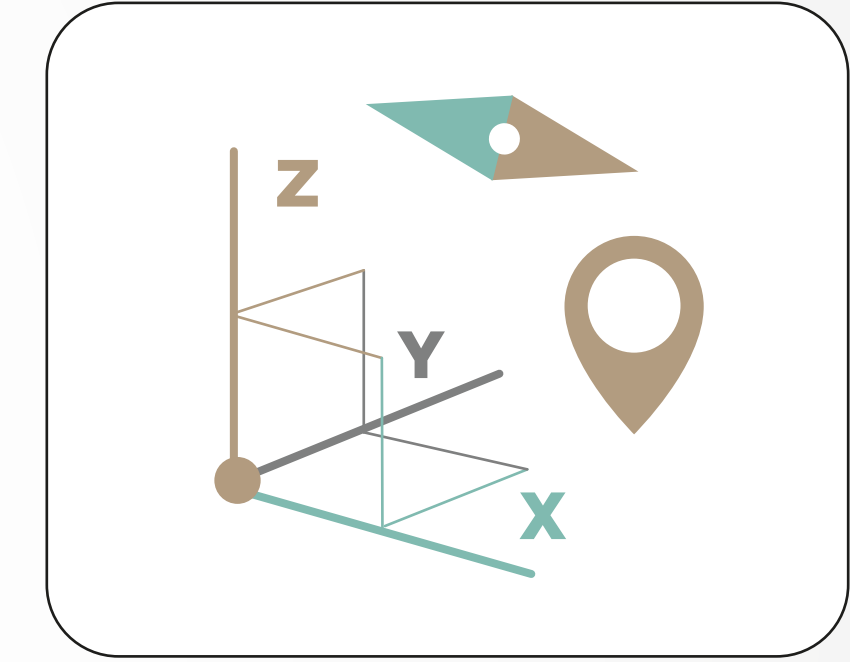
DEMs and Digital
Topographies



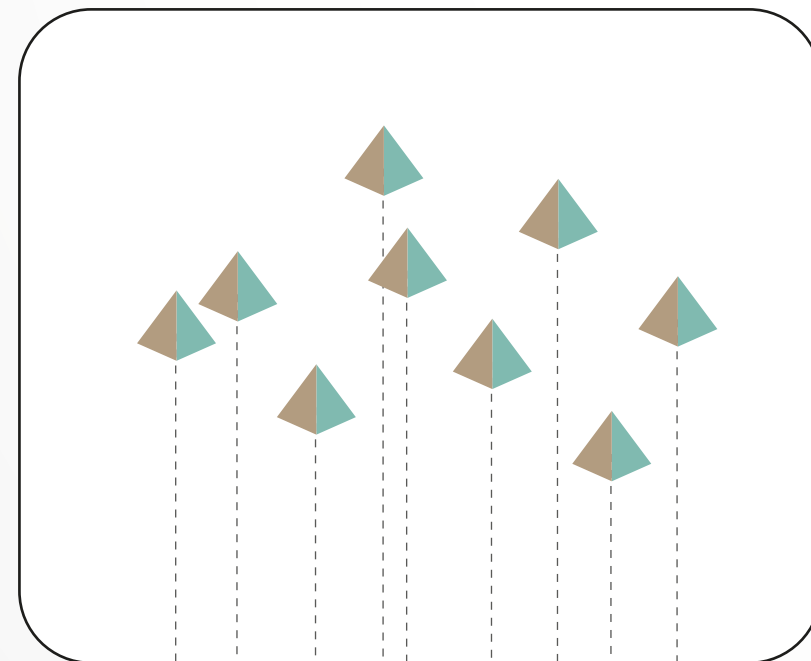
Raster Images



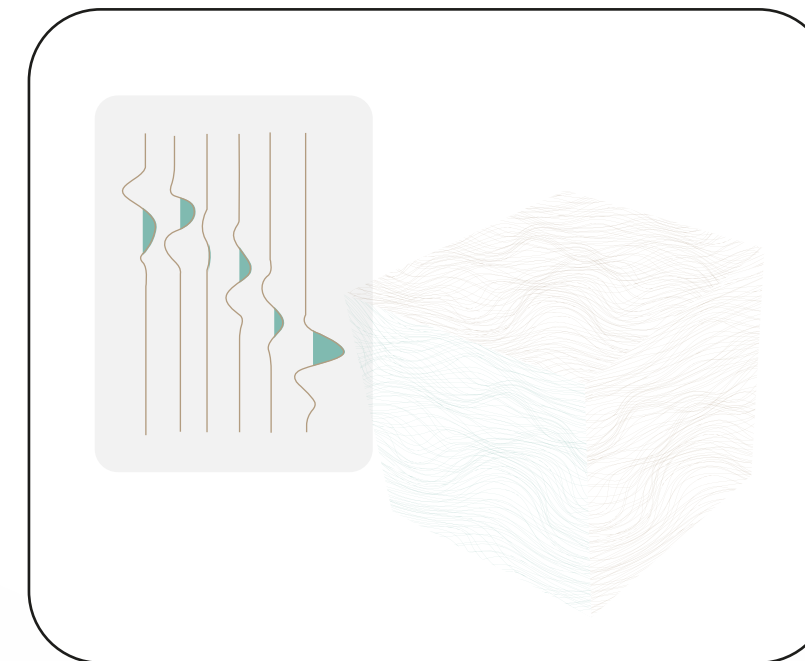
Structural
geometric data



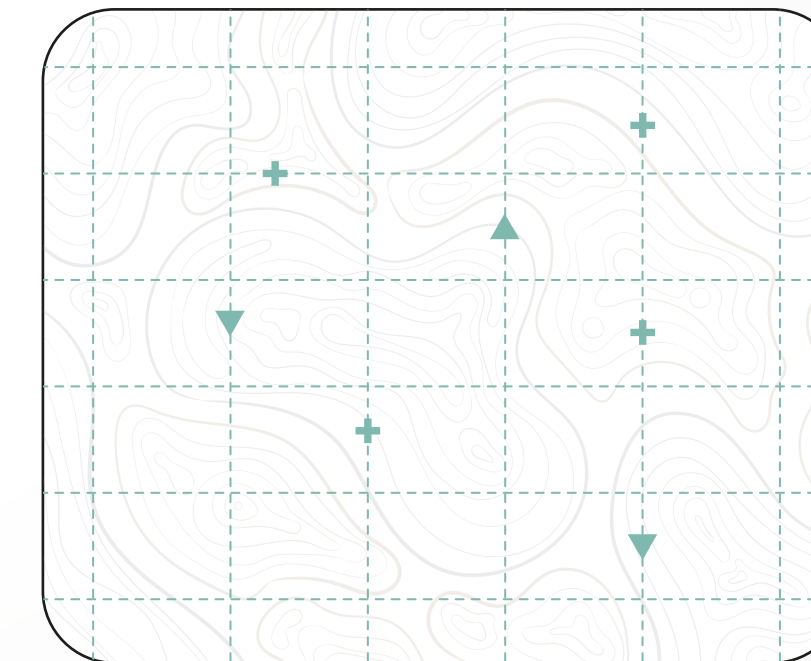
Control points and links
to external files



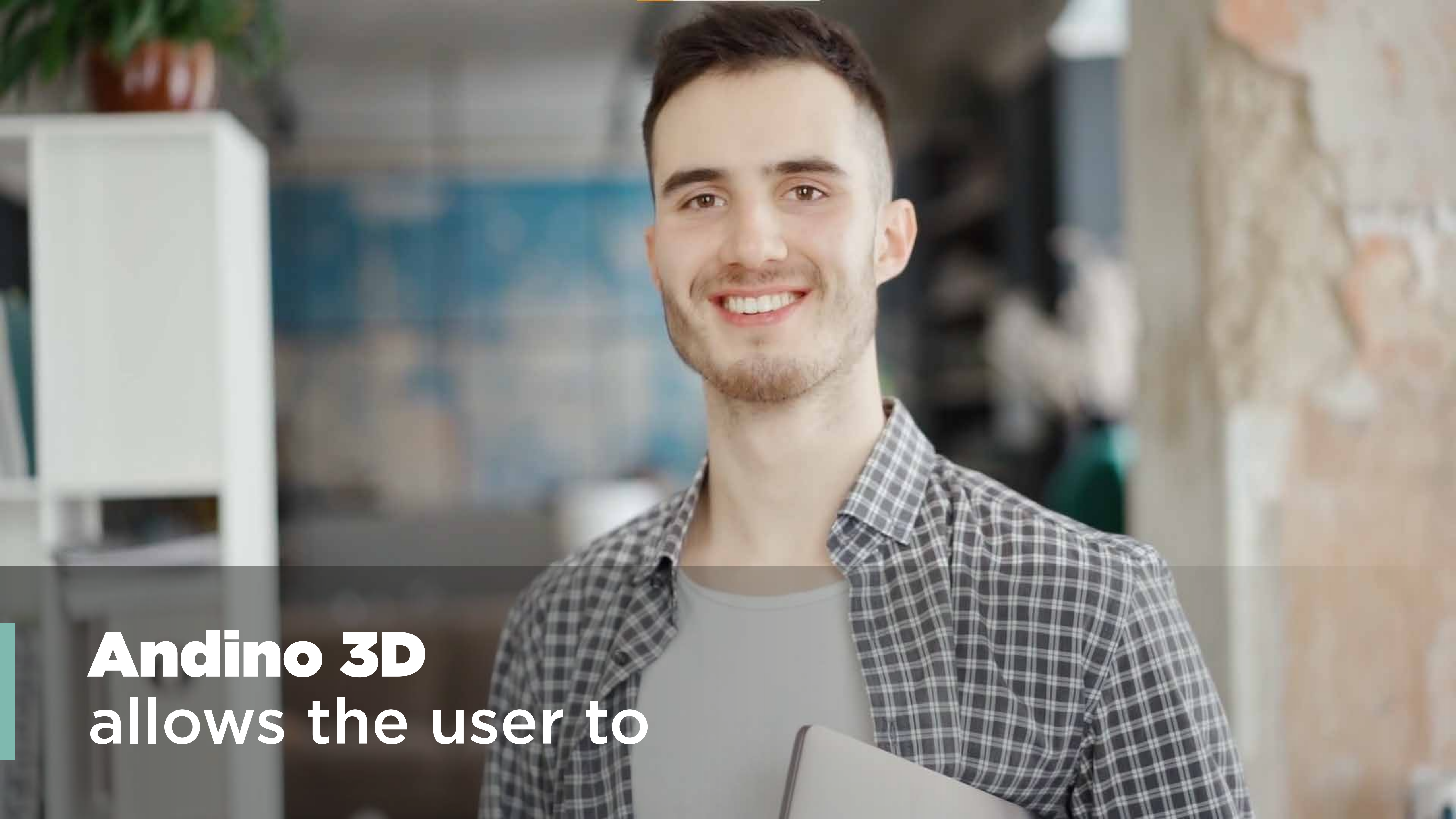
Wells trajectories,
curves and tops



2D-3D seismic
information



Maps

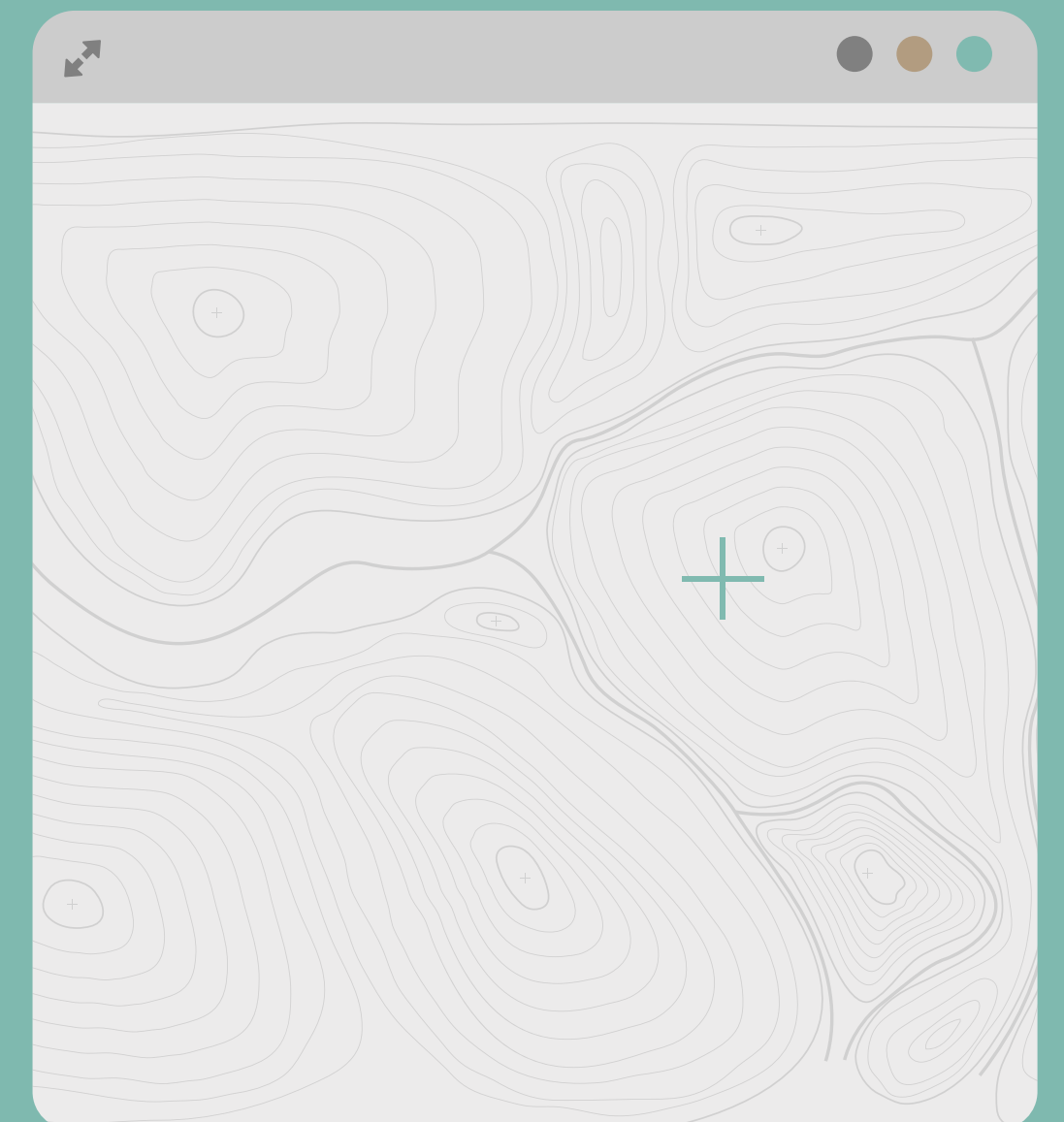
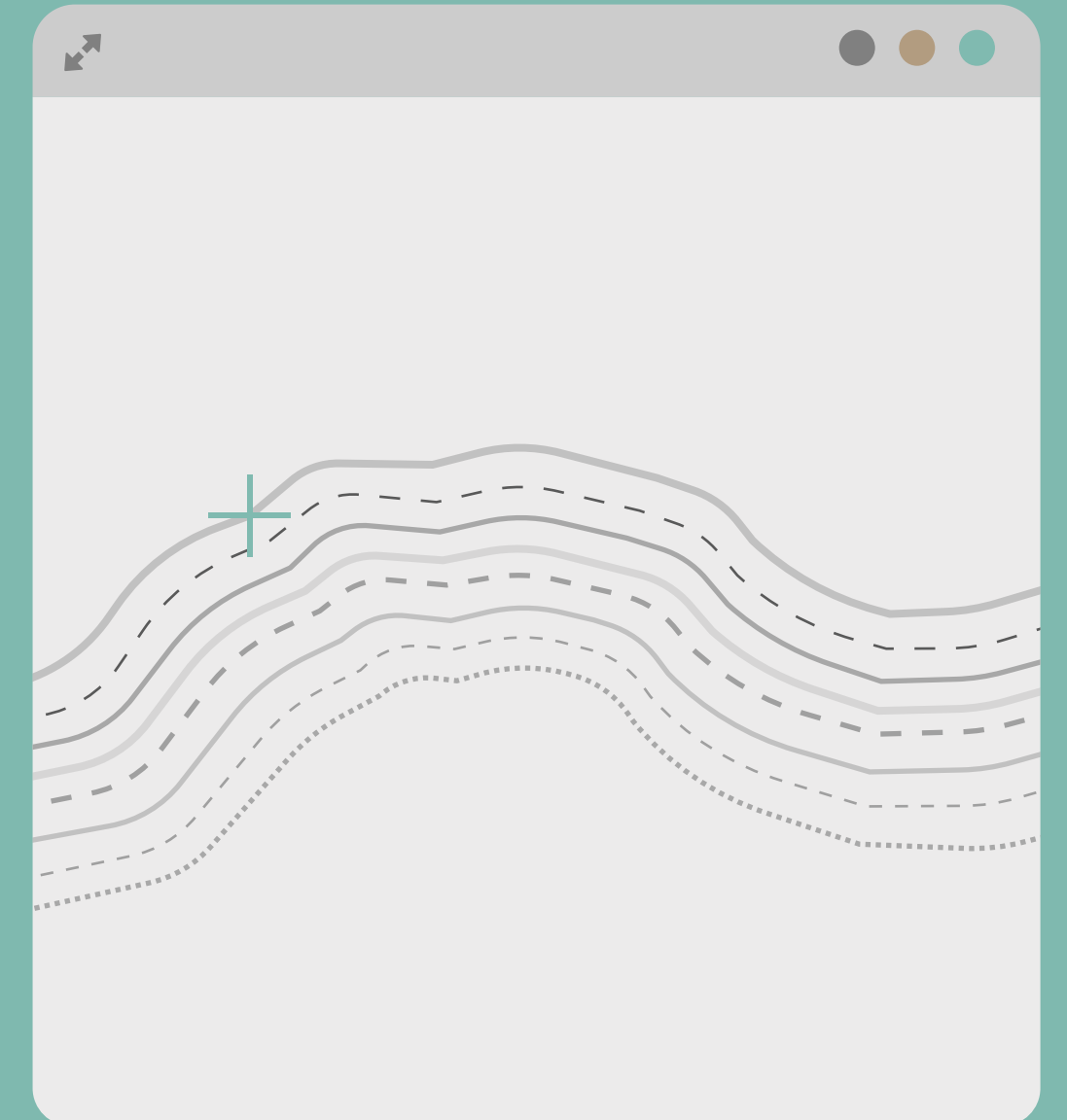
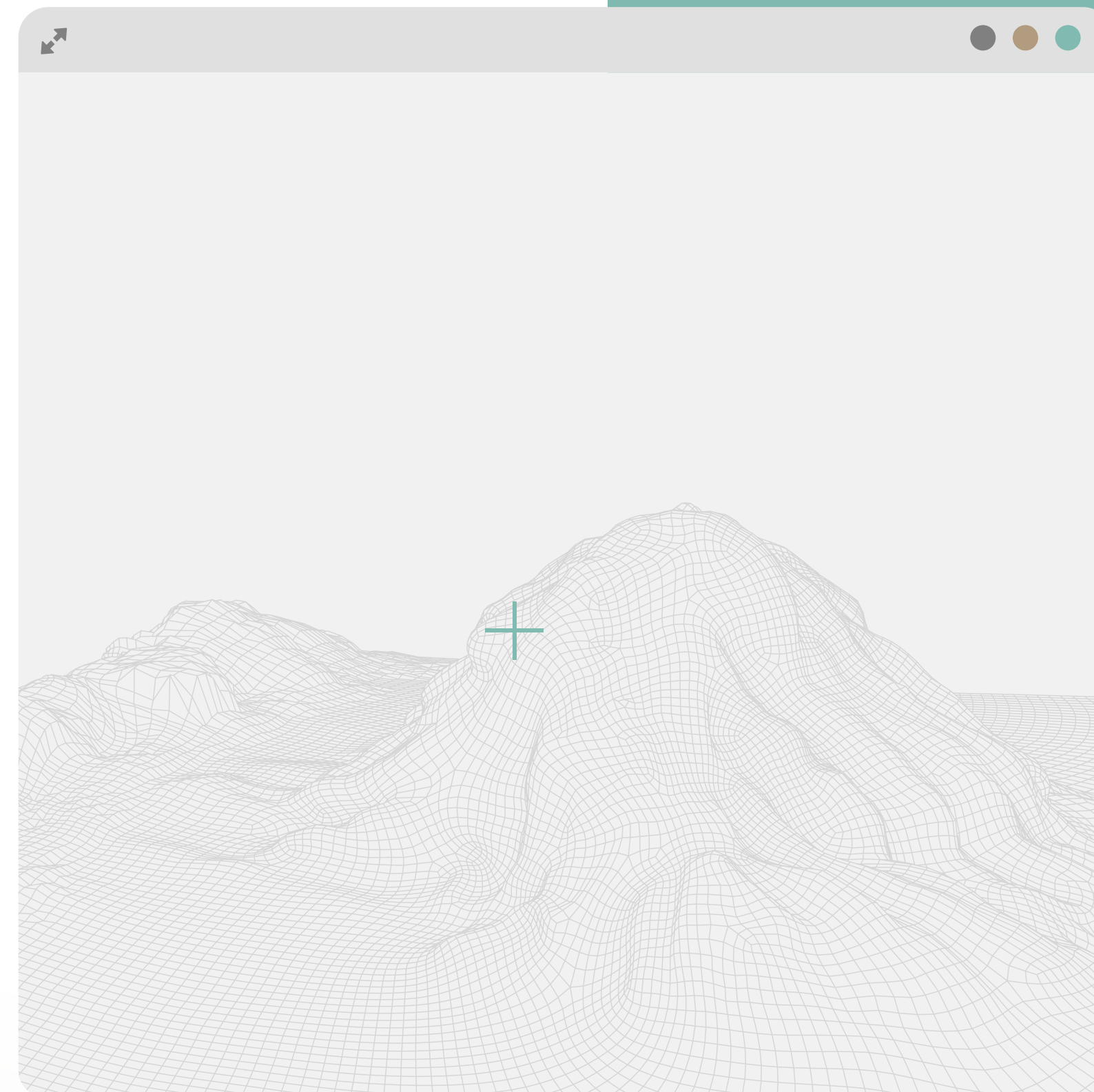
A young man with short dark hair and a light beard is smiling at the camera. He is wearing a grey t-shirt under a black and white plaid button-down shirt. He is holding a silver laptop. The background is a blurred office or studio setting with a white shelf on the left and a textured wall on the right. A semi-transparent dark grey box with a teal vertical bar on the left contains white text.

Andino 3D
allows the user to

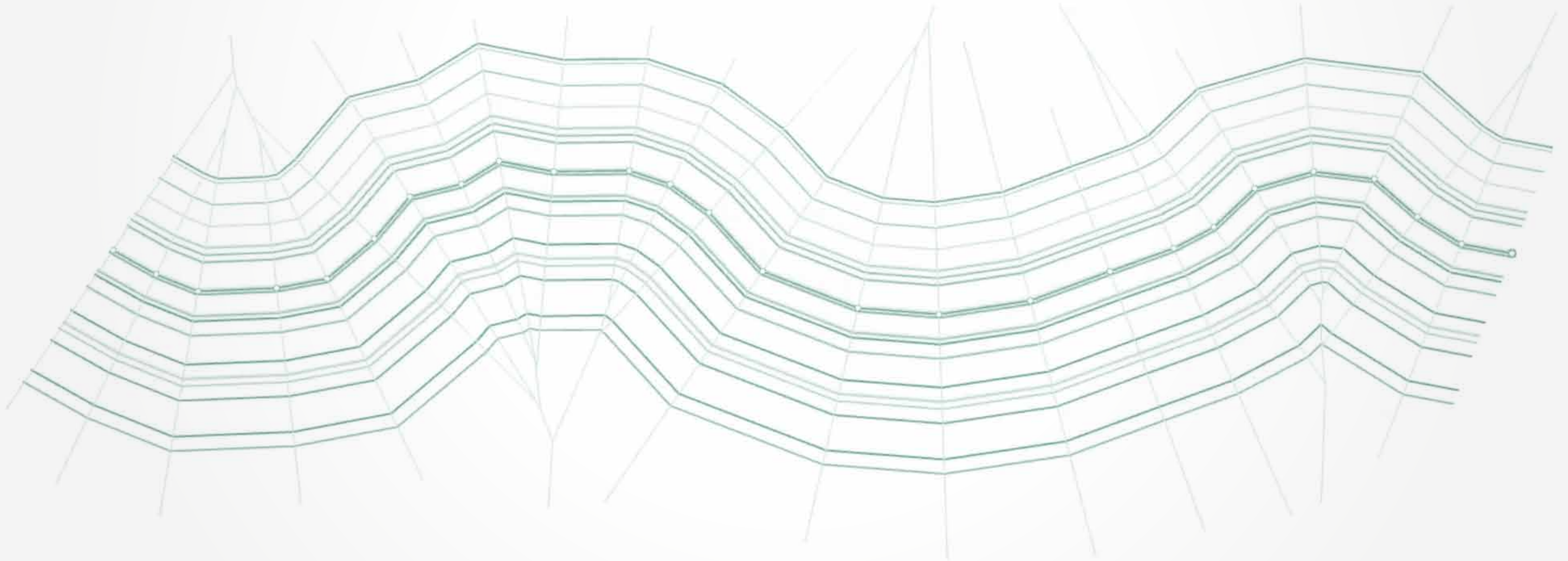
Quickly generate **new projects**, in which you can even download **digital topographies and satellite images** from the cloud.



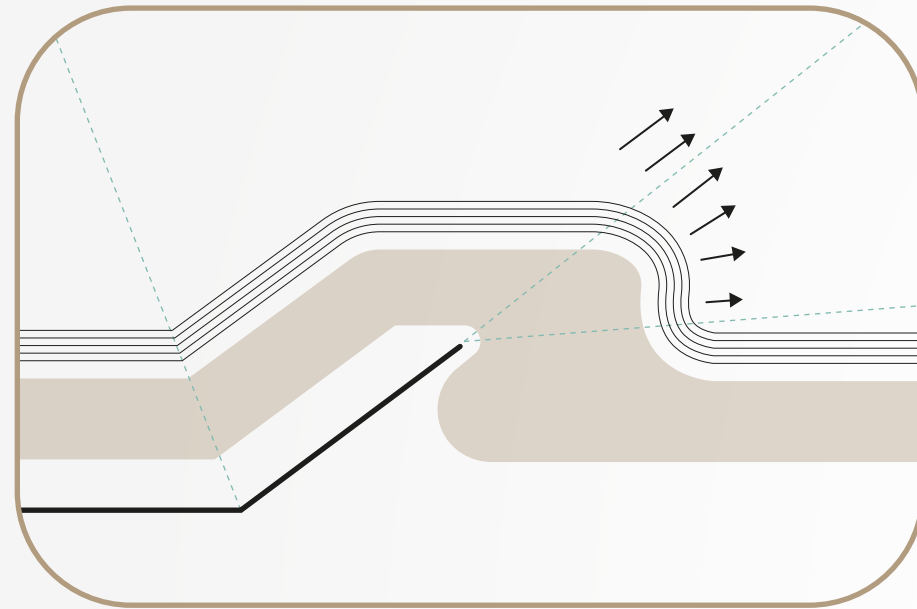
View **3D and 2D windows** of sections and maps with **linked pointers in real time** with all the information at a glance.



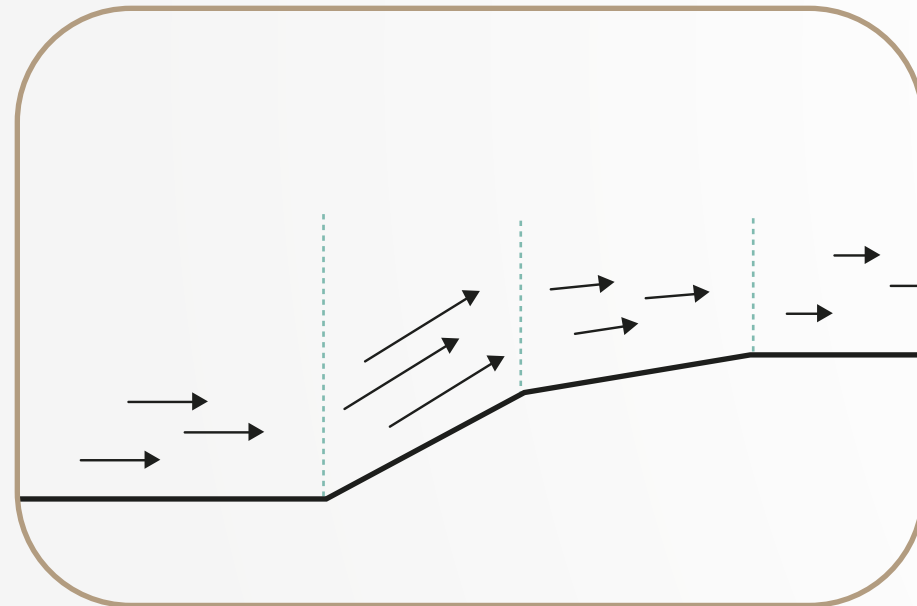
Andino 3D has **multiple** assisted drawing **tools** for the construction of balanced sections



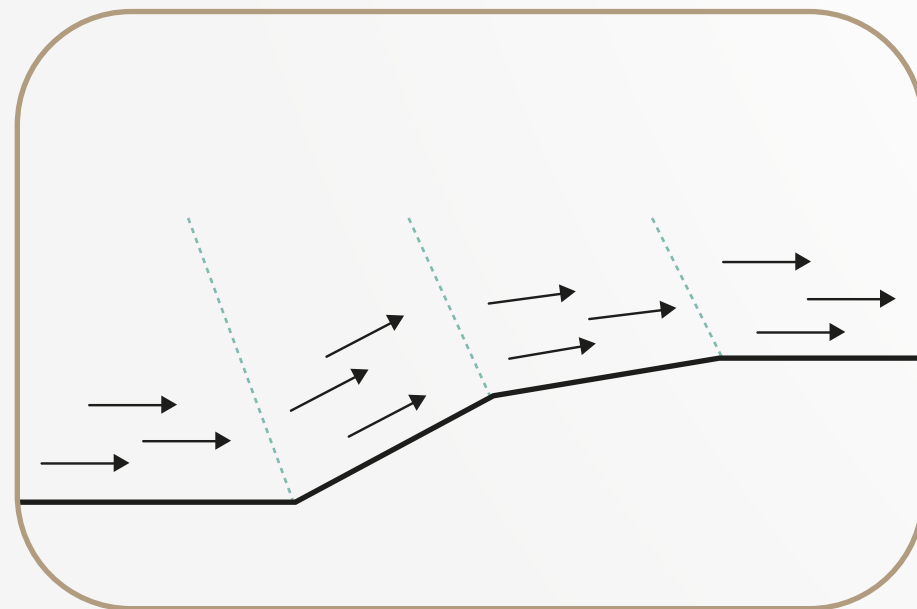
And allows the use of **forward modeling** implementing **trishear**, **inclined shear** and **fault parallel flow** algorithms



Trishear



Inclined Shear



Fault Parallel Flow





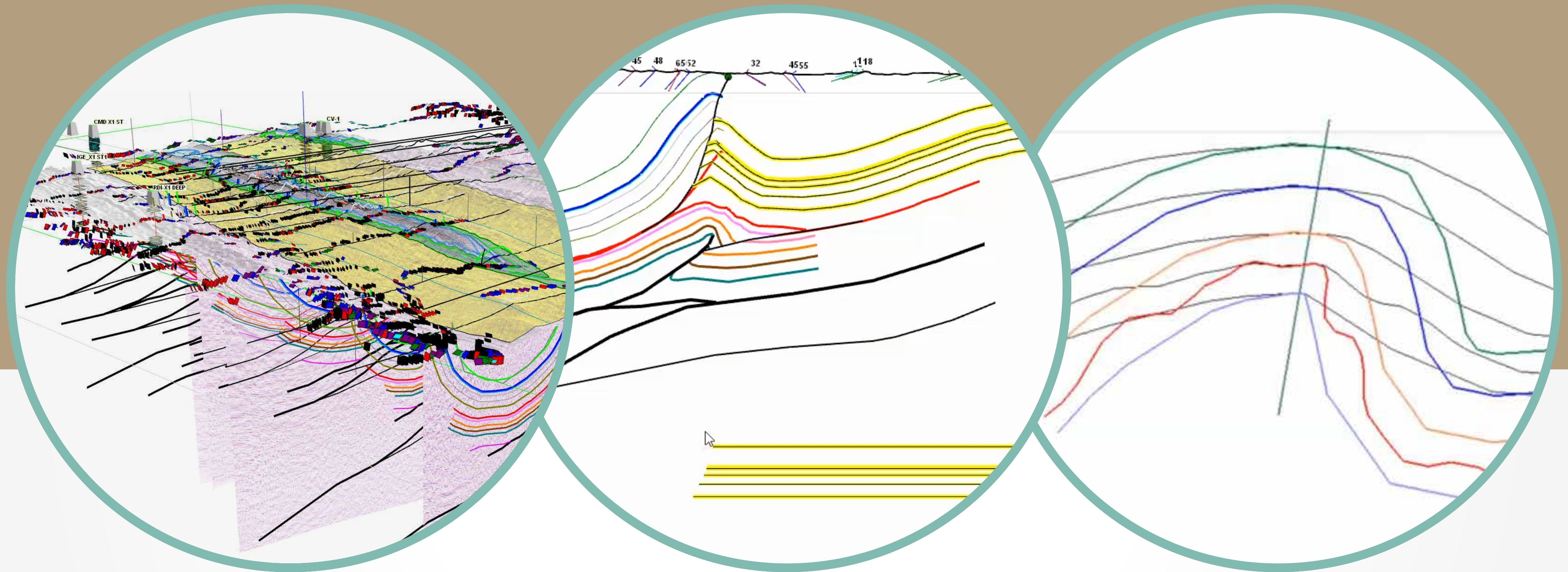
**Products developed
in Andino 3D**

The integration of
SURFACE

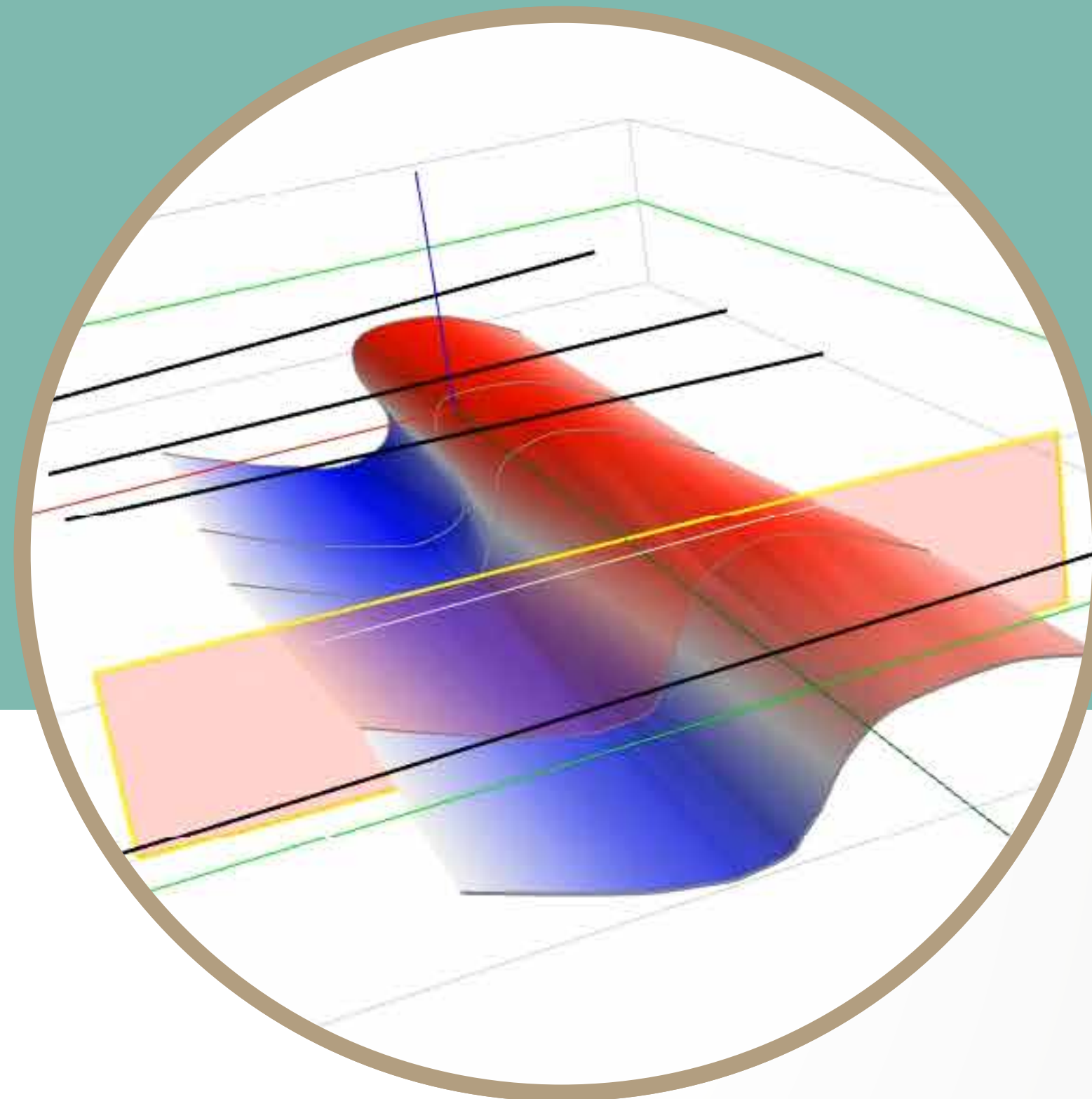
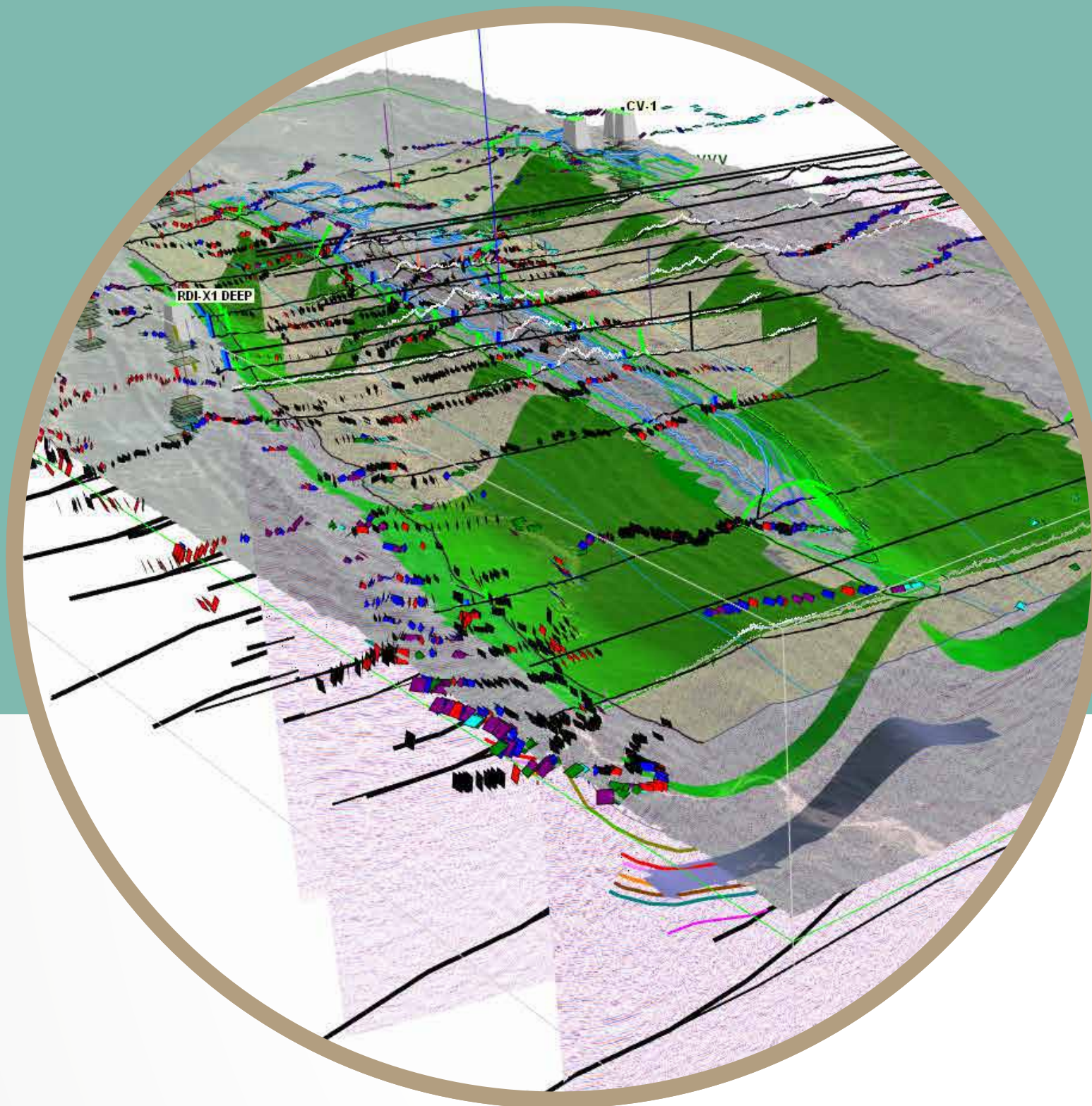
and

SUBSURFACE

data performed in **Andino 3D** allows to:

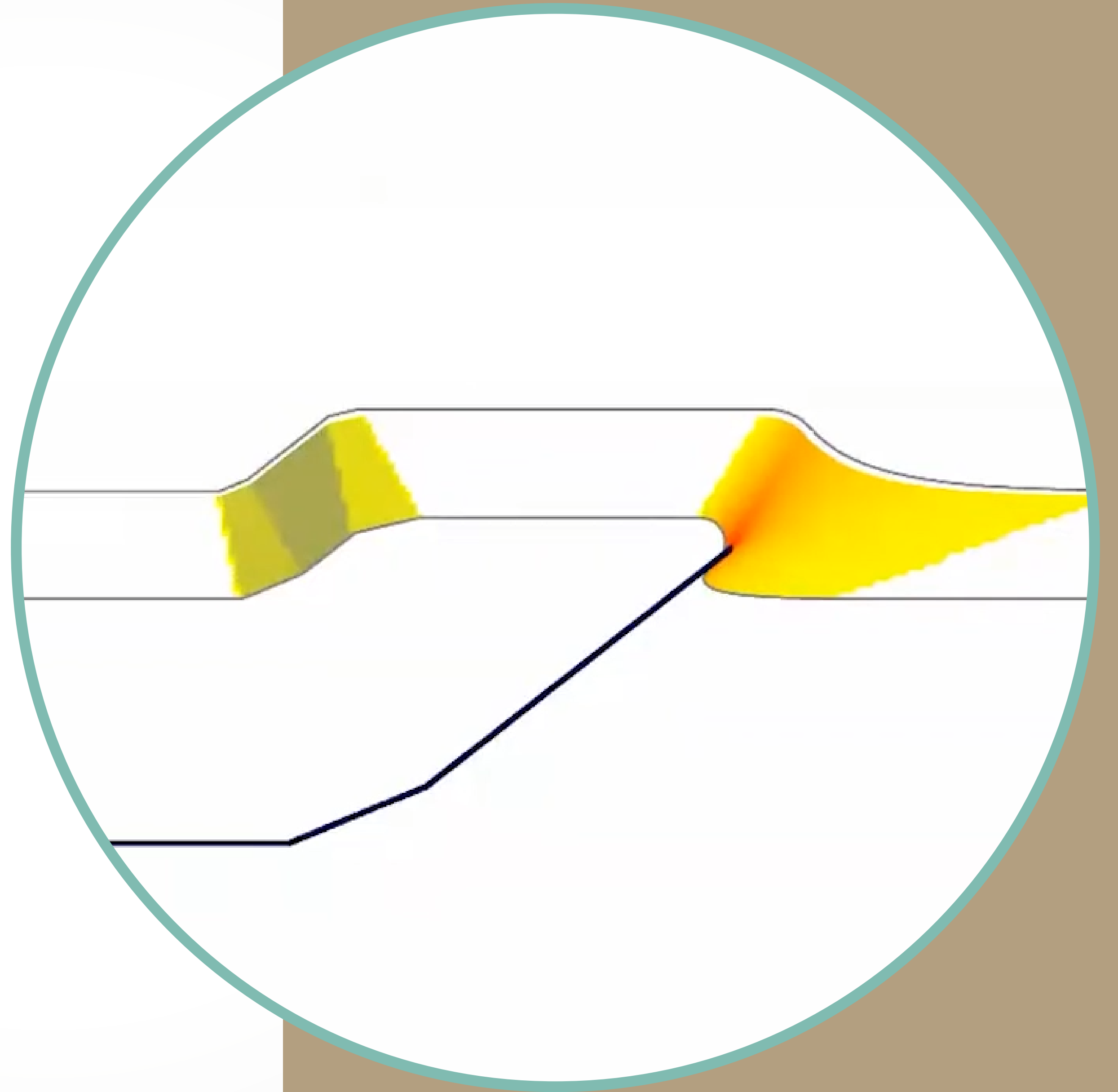


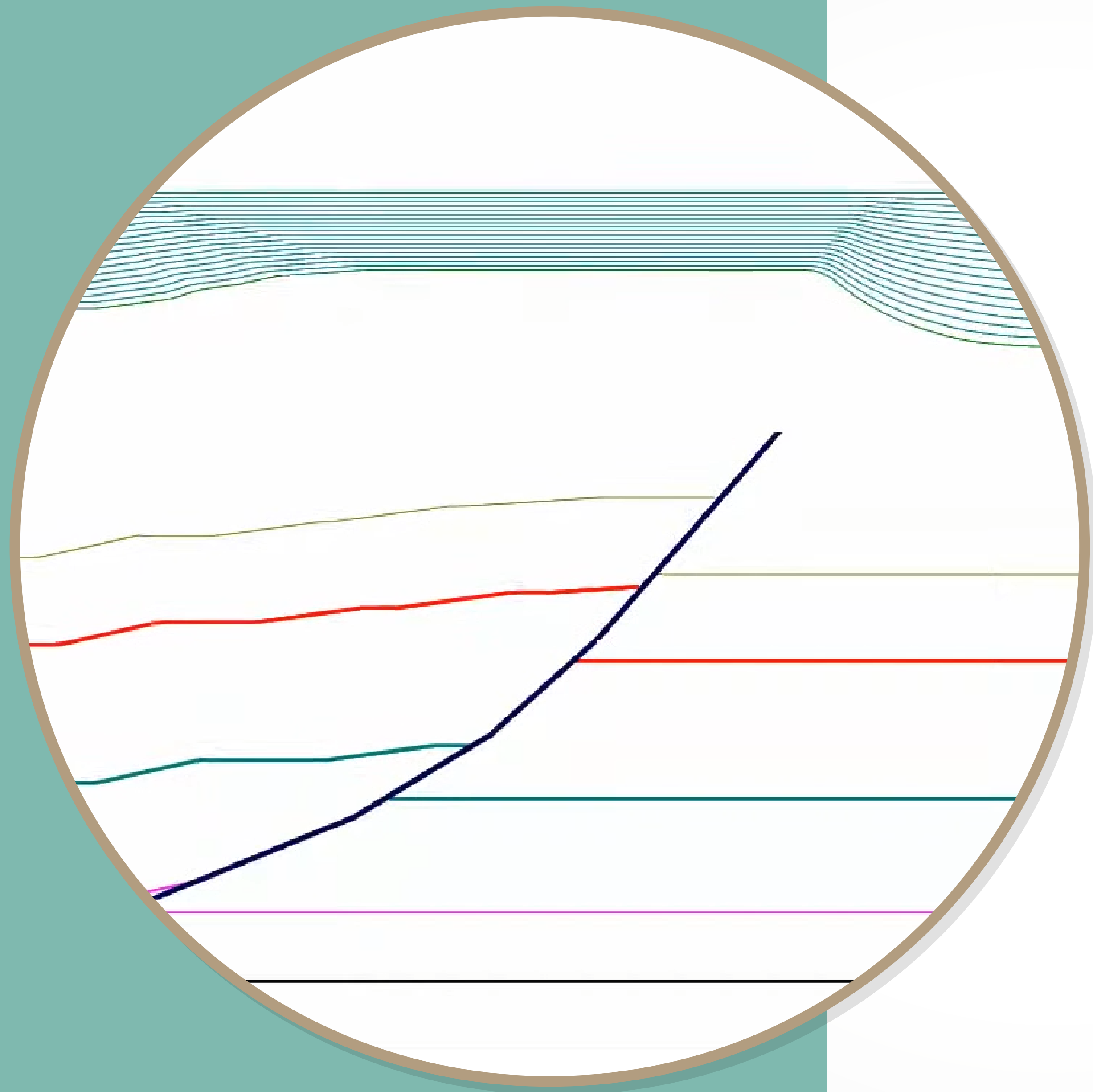
Develop **three-dimensionally integrated balanced sections** with **full restoration capabilities**



Build **layers or faults surfaces** working with
regular grids or point clouds

Perform **deformation**
and compaction
calculations and





Generate **growth strata** in kinematic models combining **Sedimentation** vs. **Uplift rates**



1

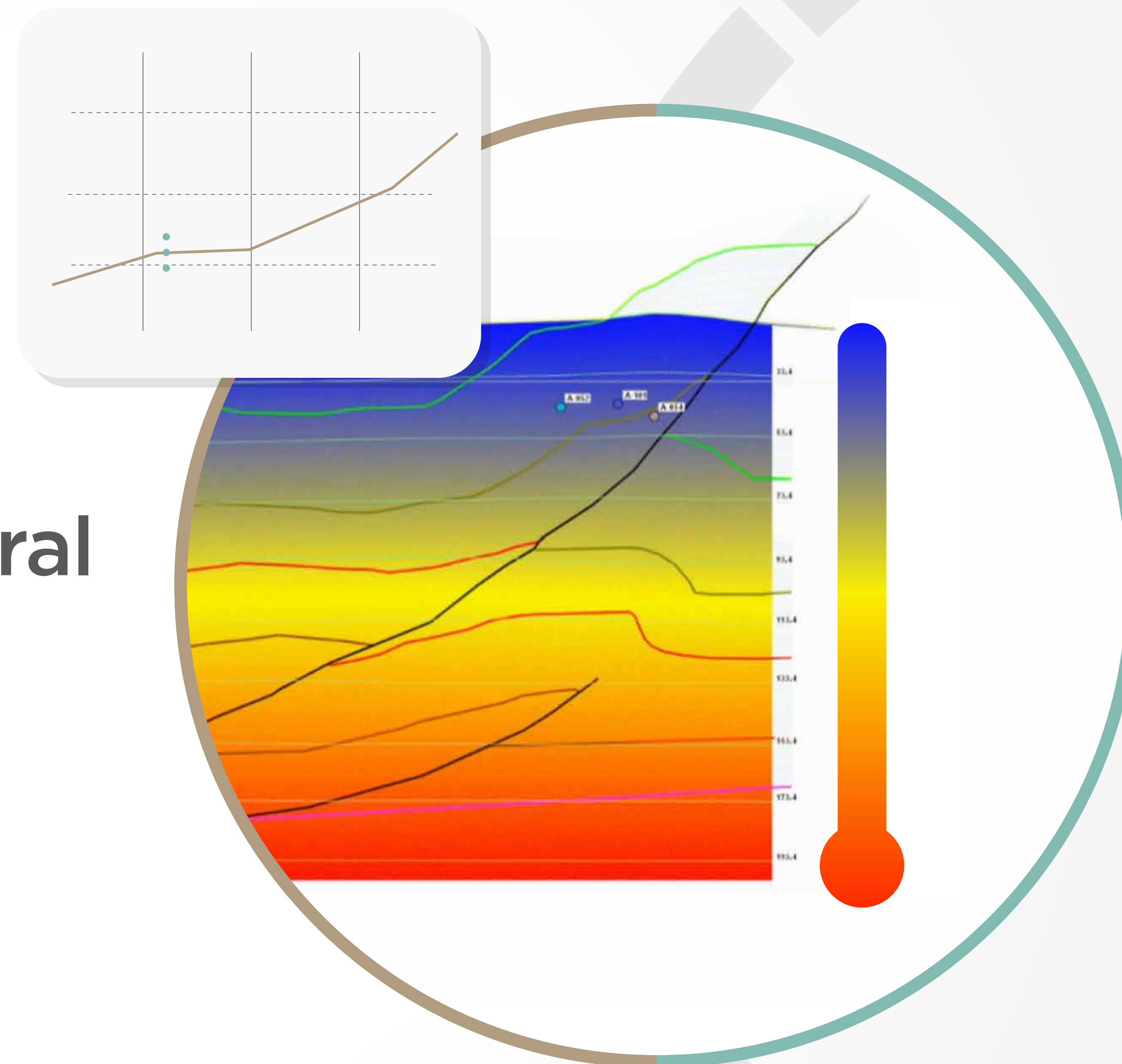
2

3

VERSION 2.0 OF **ANDINO 3D**
INCLUDES:

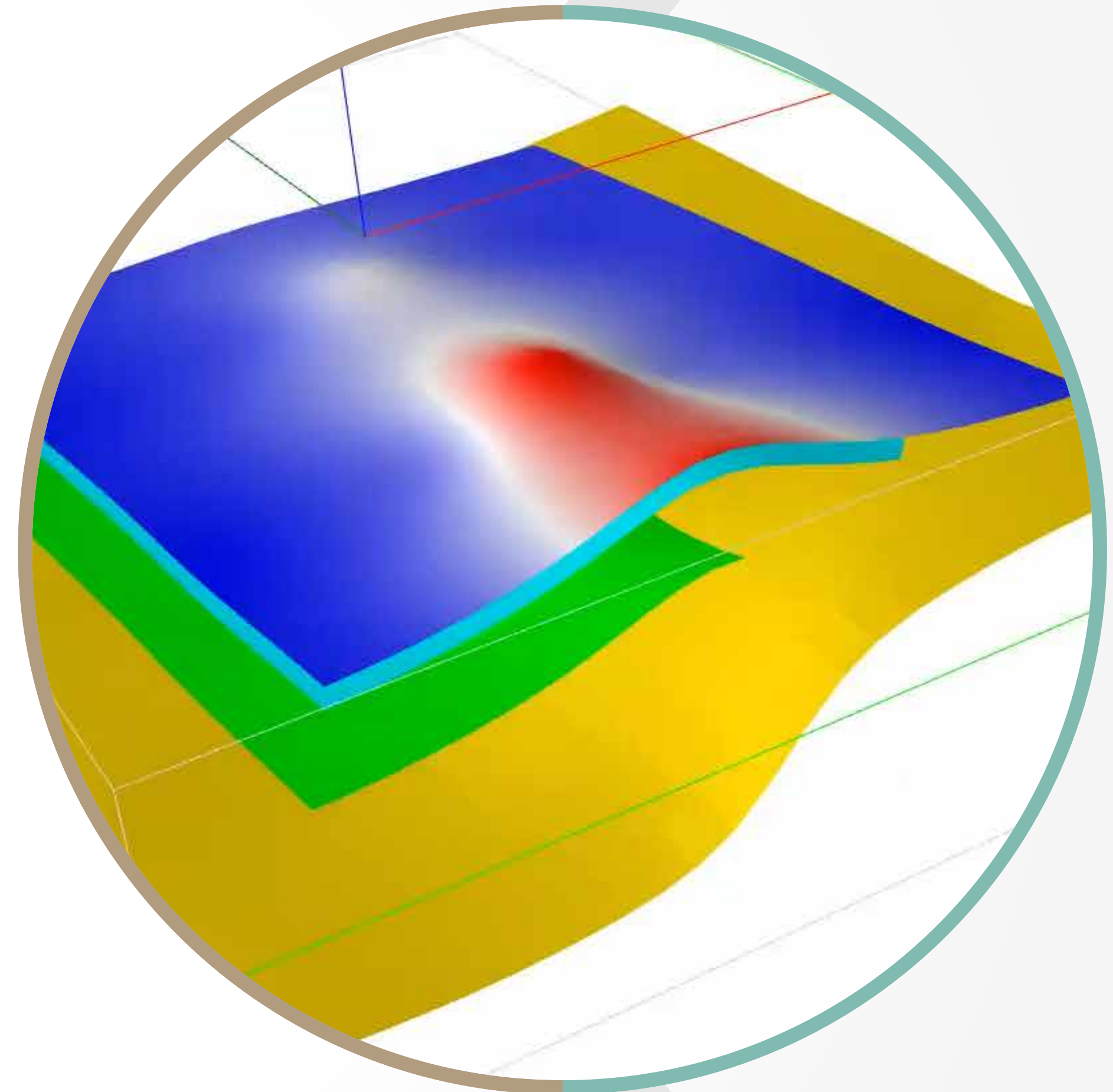
1

Thermal and Structural Modeling



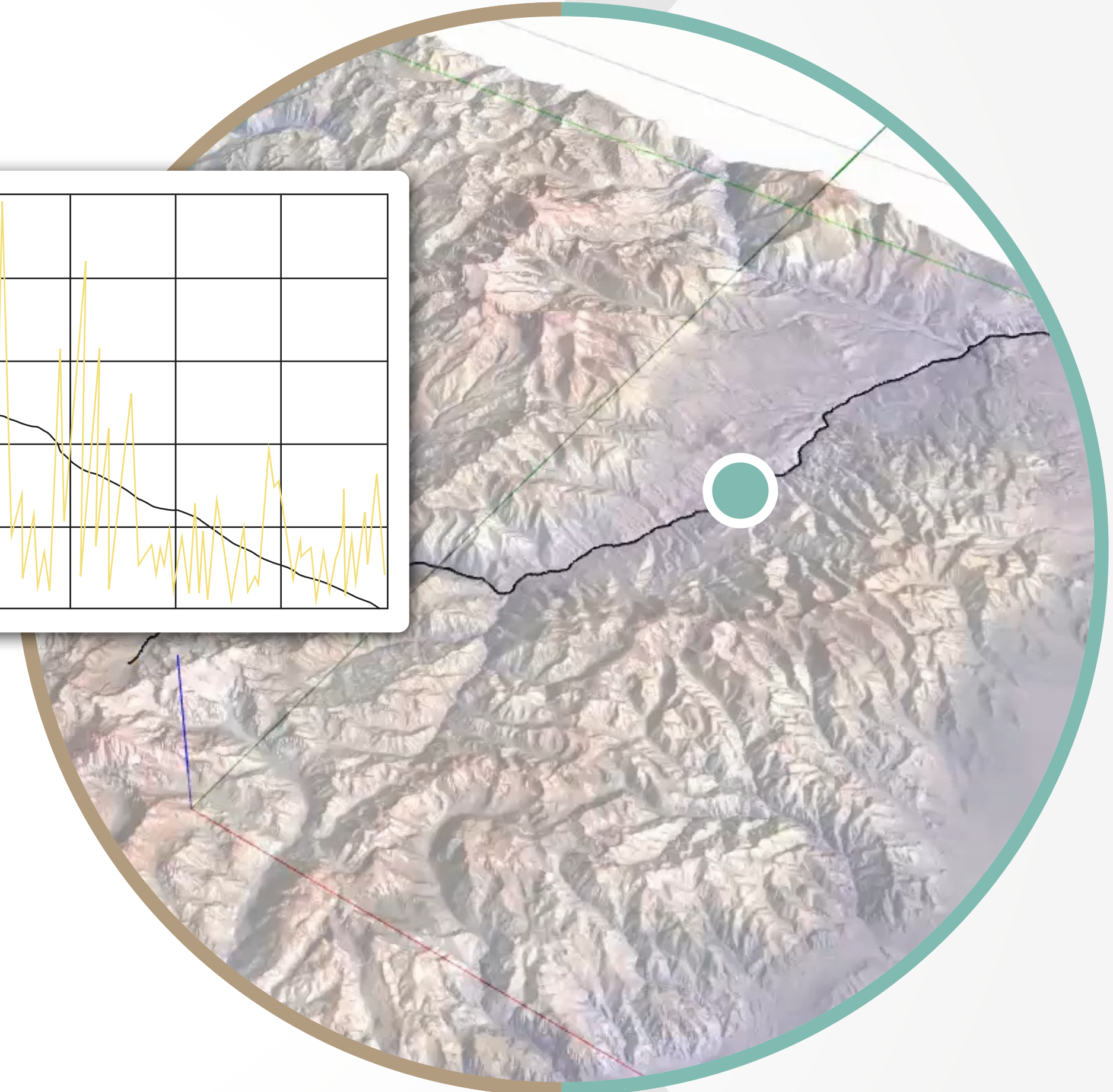
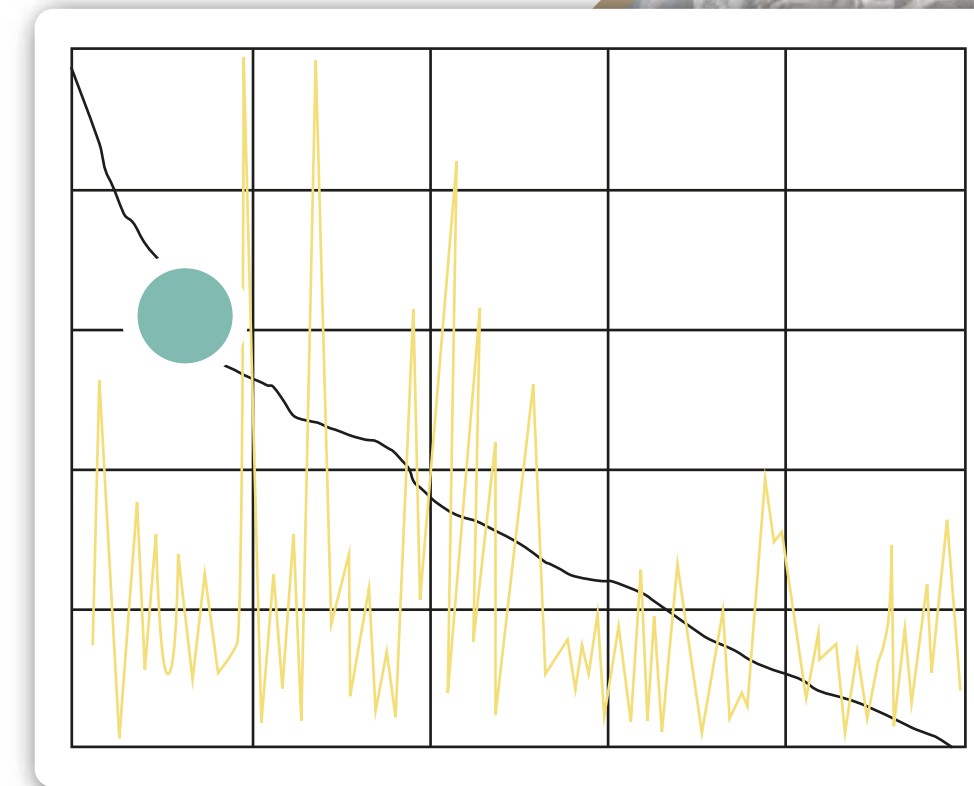


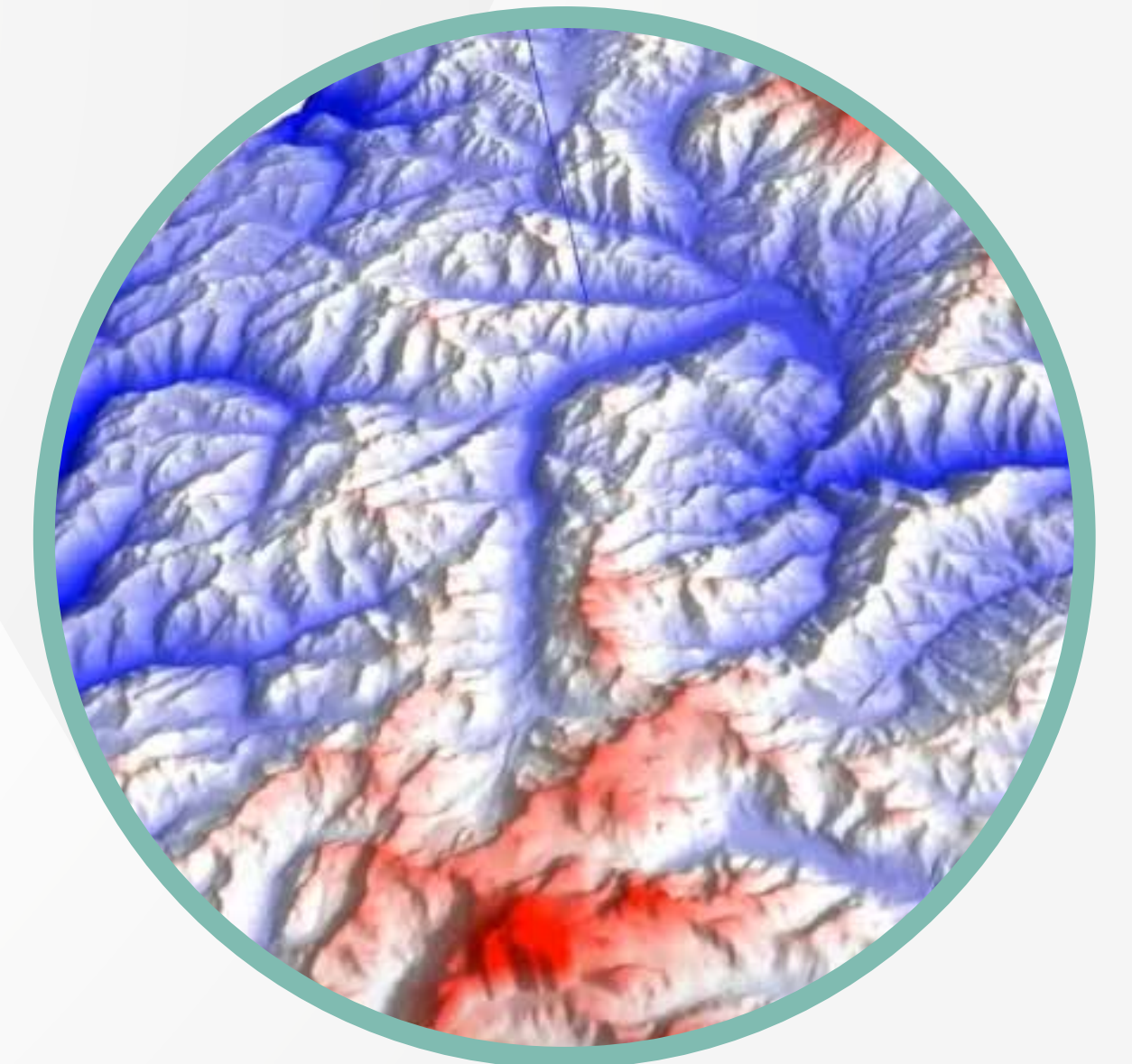
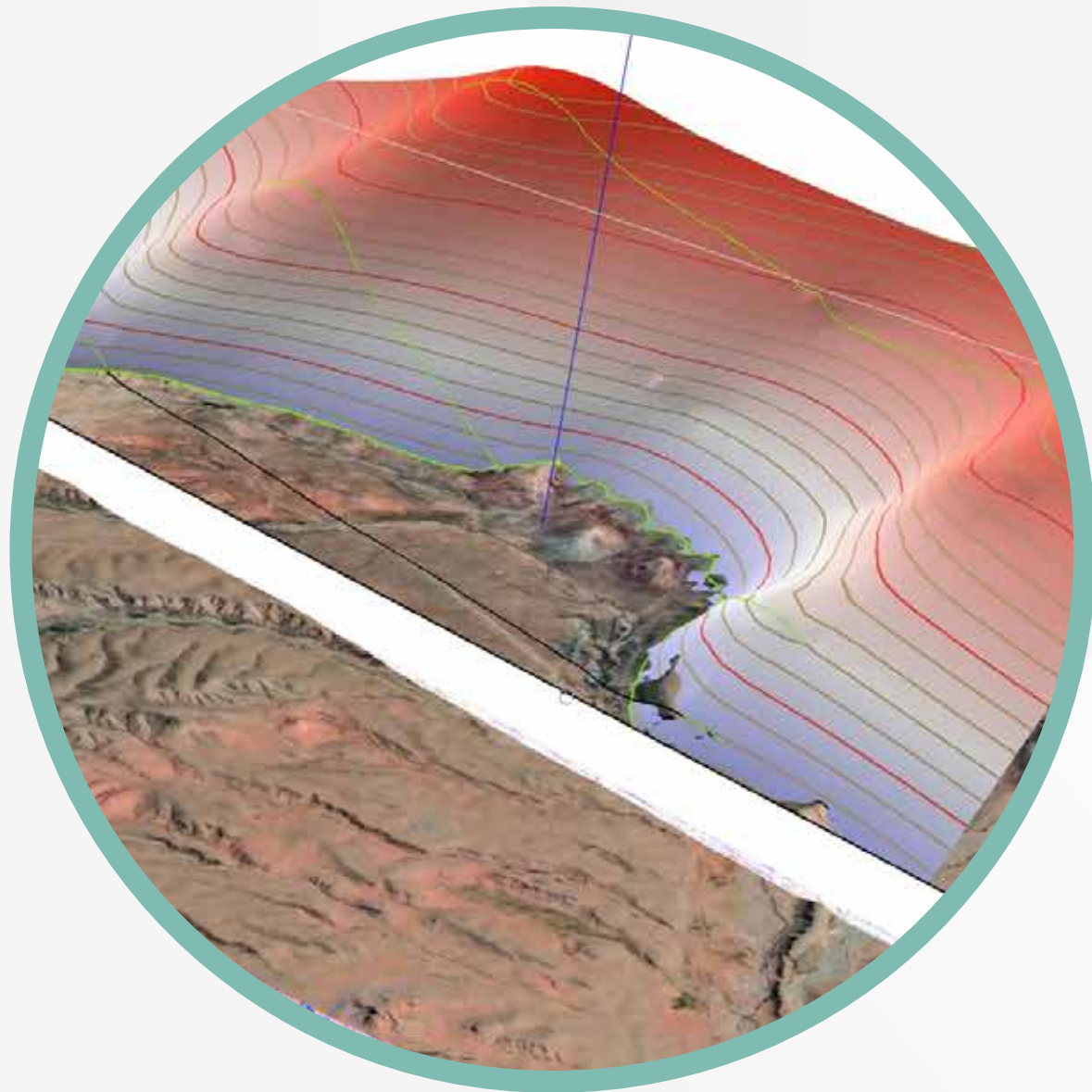
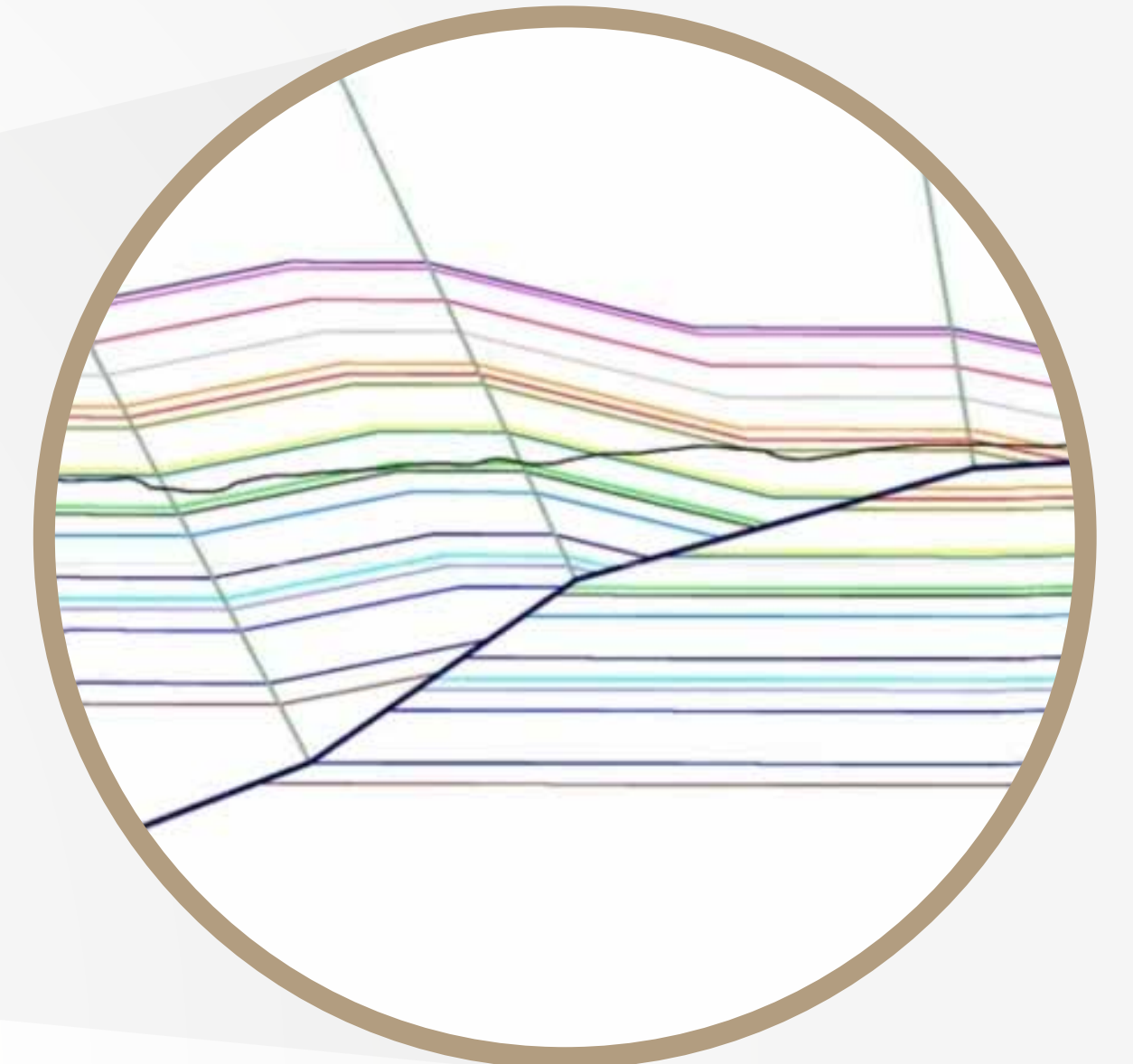
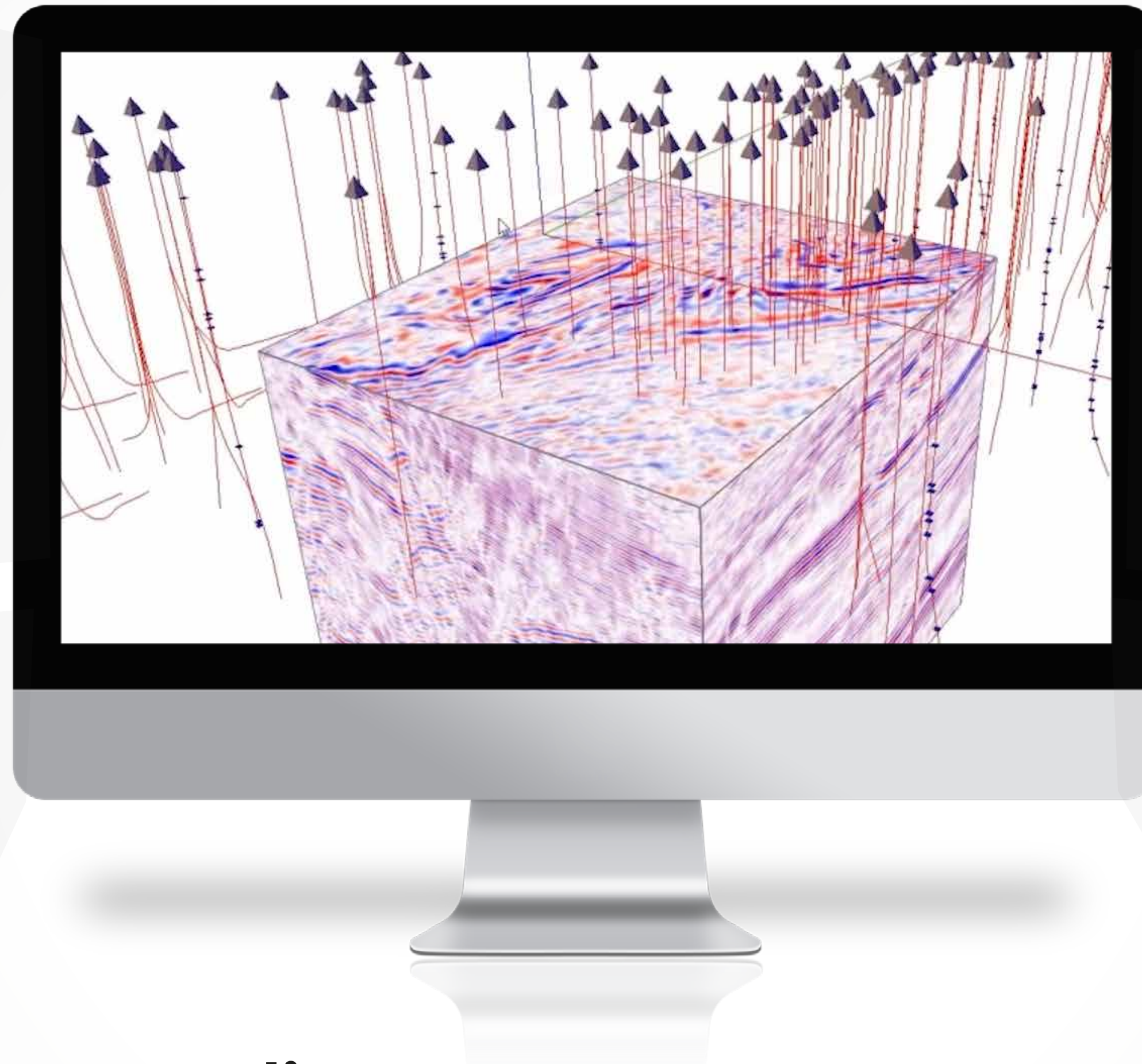
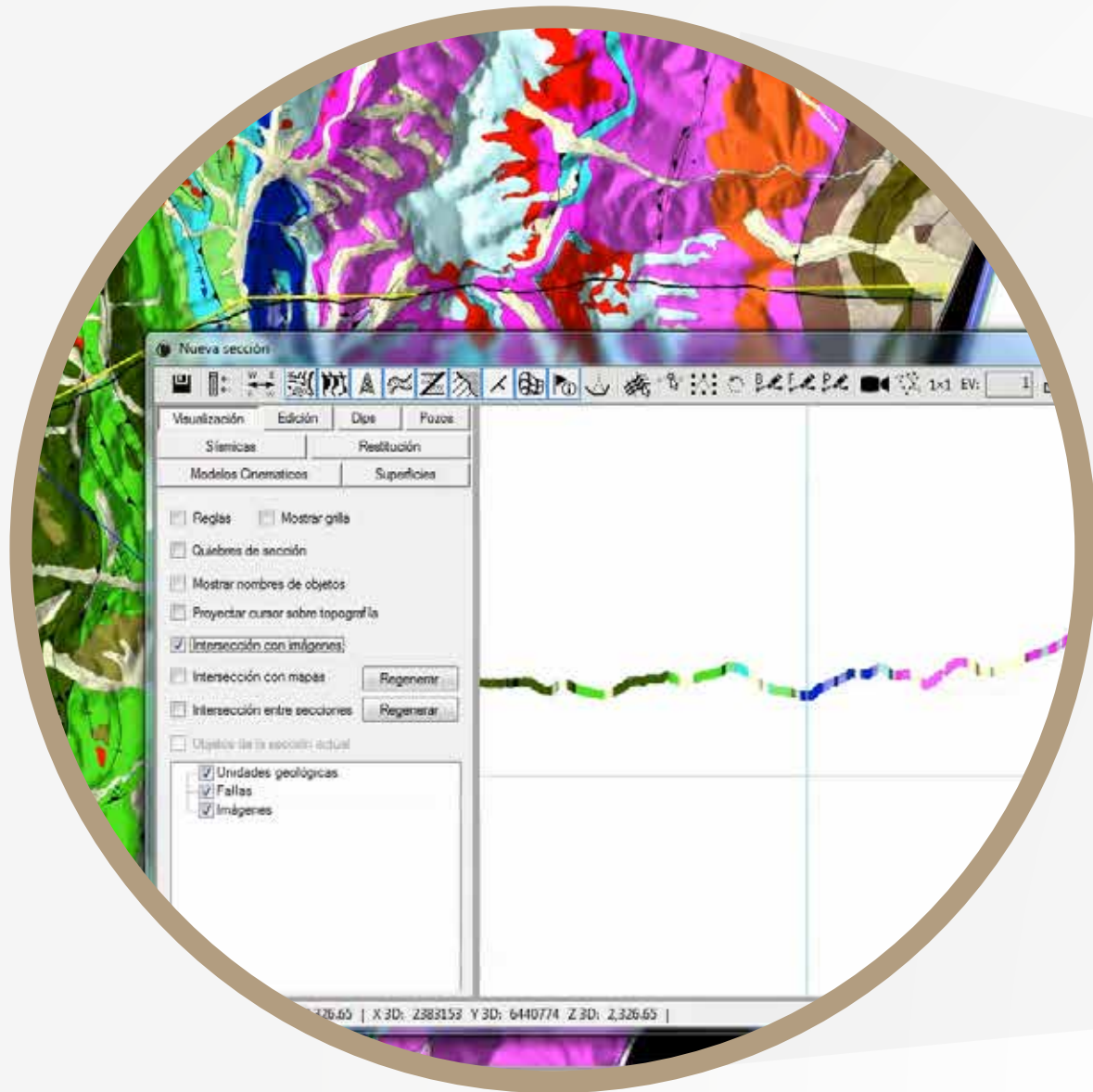
3D Kinematic Models





Tectonic Geomorphology Analysis





Andino 3D is an ecosystem in
continuous growth at the
development of new applications

Now you can be part of the
Andino 3D experience, with a
totally free TRIAL LICENSE

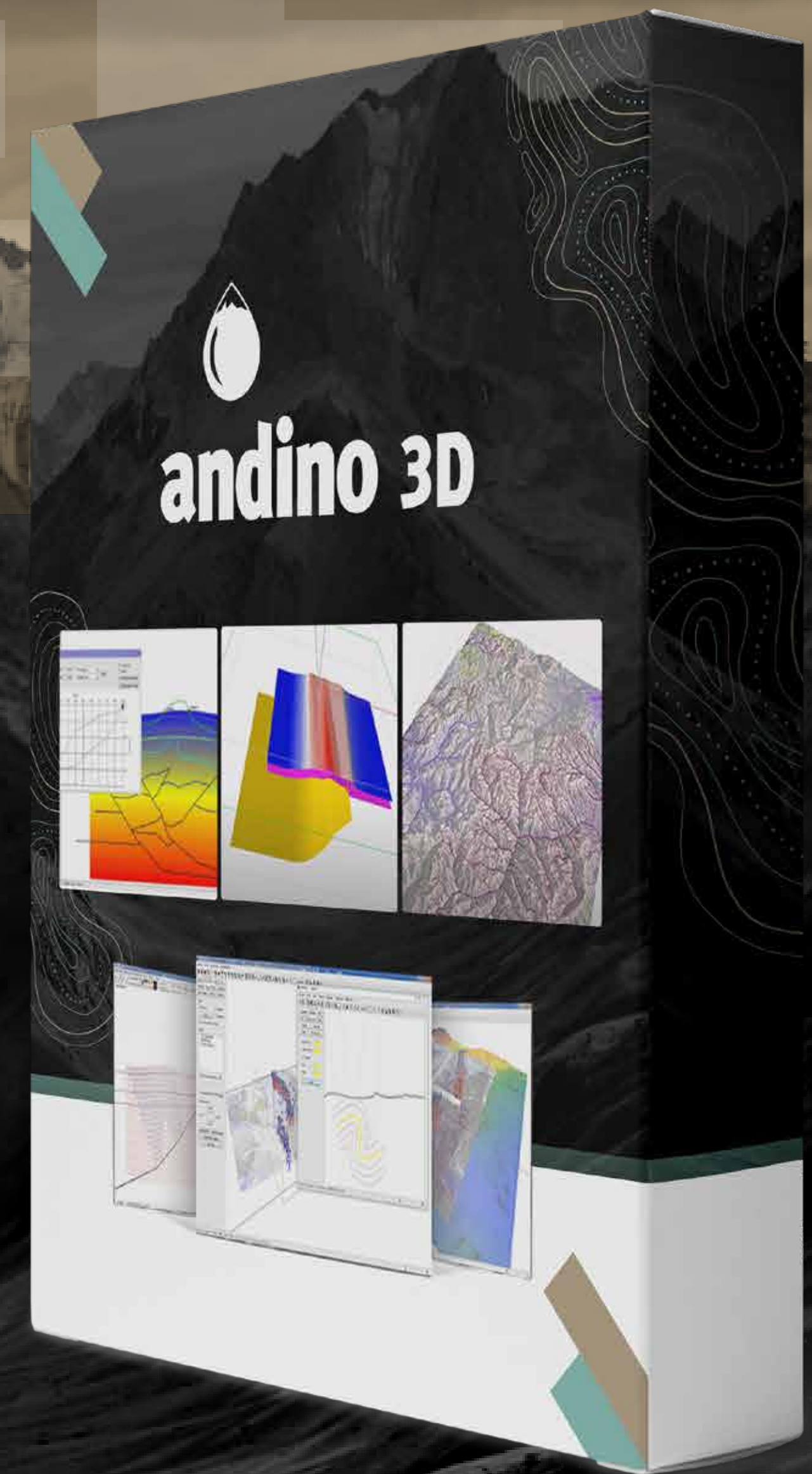
Get it right now by entering

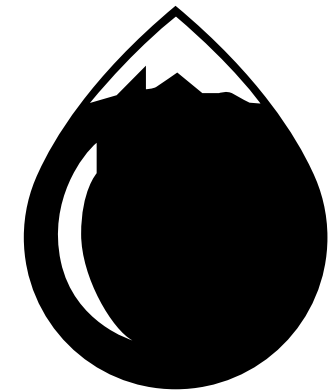


www.andino3d.com.ar/en



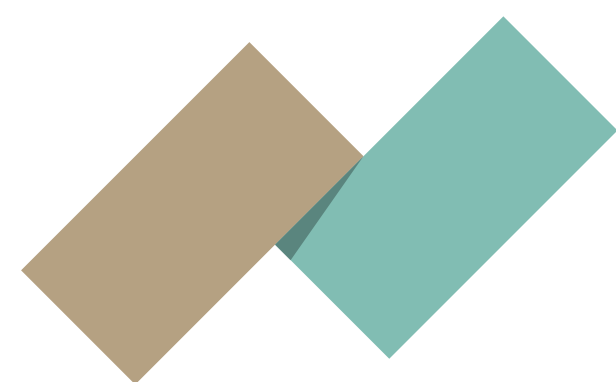
And complete your **License Application**,
or meet with the developers





andino 3D

Integrating imagination | www.andino3d.com.ar/en



LA.TE. ANDES

Grupo Empresarial



CONICET

